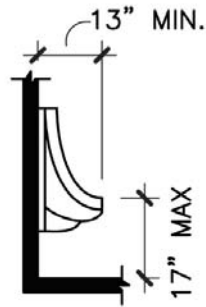


# ADA-11 URINALS

## URINALS

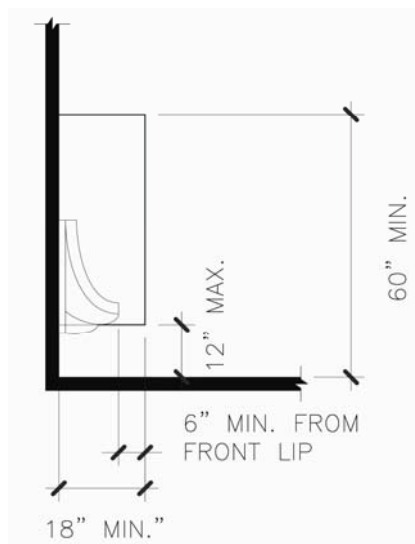
URINALS SHALL BE THE WALL-HUNG TYPE WITH THE RIM 17" MAXIMUM ABOVE THE FINISH FLOOR OR GROUND. URINALS SHALL BE 13 1/2" DEEP MINIMUM MEASURED FROM THE OUTER FACE OF THE URINAL RIM TO THE BACK OF THE FIXTURE.



WALL HUNG TYPE

## URINAL PARTITIONS

EACH URINAL SHALL OCCUPY A SEPARATE AREA WITH WALL OR PARTITIONS TO PROVIDE PRIVACY.



PARTITIONS SHALL BEGIN NOT MORE THAN 12" FROM AND EXTEND NOT LESS THAN 60" ABOVE THE FINISHED FLOOR.

PARTITIONS SHALL EXTEND FROM THE WALL SURFACE AT EACH SIDE OF THE URINAL A MINIMUM OF 18" OR NOT LESS THAN 6" BEYOND THE FRONT LIP OF THE URINAL, WHICHEVER IS GREATER.

**FOR MORE INFORMATION SEE ADA GUIDELINES 605 URINALS**